

Project Name

Hitachi Rail Factory

Newton Aycliffe, County Durham, UK

CUSTOMER
Hitachi / Agility Trains Consortium

SECTOR
Industrial

DATE
2015

PRODUCTS

- Conbextra EPR

THE PROJECT

Hitachi, world renowned for their train manufacturing expertise, is part of the Agility Trains consortium awarded a £5.8BN contract to finance, design, manufacture, maintain and service the next generation of intercity carriages to improve the UK's mainline rail services. Nearly 900 new carriages will be made in a factory currently under construction at Merchant Park, a site in Newton Aycliffe, County Durham.

Fosroc first became involved in the project in November 2014 when we were asked to advise on grouting new machine rails into place ready for the manufacture of the carriages. Throughout the project cementitious grout had been specified for the installation of the traverser rails. Fosroc met with the contractor, sub-contractor, civil engineer and QS to discuss a more cost effective solution which would ensure longevity.

THE SOLUTION

Conbextra EPR was demonstrated to provide a better long term solution than competitors' grouts, due to its ability to operate under dynamic load and also its non-shrink qualities, backed by its successful track record across Europe and beyond, in similar installations.

The scale of this project required ongoing site support from Fosroc's sales team, as well as the Technical Department throughout the installation, working closely with Trackwork's designer and QS to answer all questions and queries. In addition, regular visits were made to site to assist with smooth installation.

The supply schedule was extremely challenging with the customer changing time frames which involved all the Fosroc supply chain and production team working closely together to supply a year's production of Conbextra EPR in 6 months. Over 60,000ltrs of Conbextra EPR has been laid to date on this project, which is still ongoing.

THE BENEFITS

Conbextra EPR's non-shrink resistance to repetitive dynamic loads and high compressive, tensile and flexural strength provided a highly attractive solution and although other companies had discussed epoxy based grout, no one else had provided benefits backed up with technical expertise, site support and differing grades if required. The design life of the Conbextra EPR provided additional security for the client maintaining their reputation for excellence.

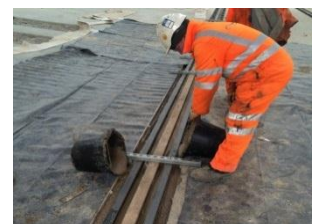
Following Fosroc's ability to support and supply this project to schedule, Fosroc are now supplying all epoxy based grout for identical projects and have become supplier of choice. This has led to Fosroc securing the Doncaster rail project at an estimated value of £200k.



Exterior of factory



Site visit carried out to assist with smooth installation



Machine rail grouted in using Conbextra EPR