



SPECIAL MORTARS FOR CHALLENGING SITUATIONS





FINJA BEMIX AB

As part of Finja we mainly develop special mortars, supplying them to the Swedish construction industry, and we have a wide range of advanced and customised expanding mortars. The products are aimed at professionals and their areas of use include everything from the advanced underpinning of machines, crane runways, overhead cranes, columns and bridge bearings to anchoring bolts in rock and jointing prefabricated concrete elements.

We supply throughout the country and examples of construction projects in which our products have been used include Öresundsbron, Friends Arena, Nya Karolinska Solna and Emporia. They were also useful in the comprehensive renovation of the Tingstadstunneln. The big picture is important for us and, in addition to material and expert help, we provide high quality mechanical equipment. Currently we have ten employees and aim to turn over SEK 100 million.

CONTENT

BEMIX 2

A BIG LITTLE BUSINESS 4

EXPANDING MORTAR 6

UNDERPINNING AND POINTING MORTAR 8

EXPANDING MORTAR 10

ACCESSORIES 13

REPAIR MORTAR 14

CONCRETE REPAIR AND METHODS 16

REPAIR MORTAR 18

BYGGPALL PALLET RETURN SYSTEM 18

MACHINES 20

PUMPS 22

MIXERS 24

MACHINE PACKAGES 26

ACCESSORIES 27

SNIGELDYNAMIT 28

CONTACT 32





A BIG LITTLE BUSINESS

Finja is a Swedish family business. Its journey started in a gravel pit acquired in 1957. Add in a large portion of knowhow, commitment and courage and you have the company as it is today, one of the country's leaders in the concrete industry.

Our companies complement each other, covering everything from structural solutions for masonry and rendered constructions to sand, special mortars and prefabricated end-to-end solutions for residential buildings, offices, industry and agriculture.

Today we employ almost 700 people and aim to turn over SEK 2 billion. At Finja we value being near to our customers and we have a presence in a number of locations in Sweden and Norway. While we are expanding continuously the nimble drive of the original company is still with us, and we continue to develop new products and invest in modern production facilities. Everything to stay in shape and continue on our journey.





Friends Arena, Solna

EXPANDING MORTAR

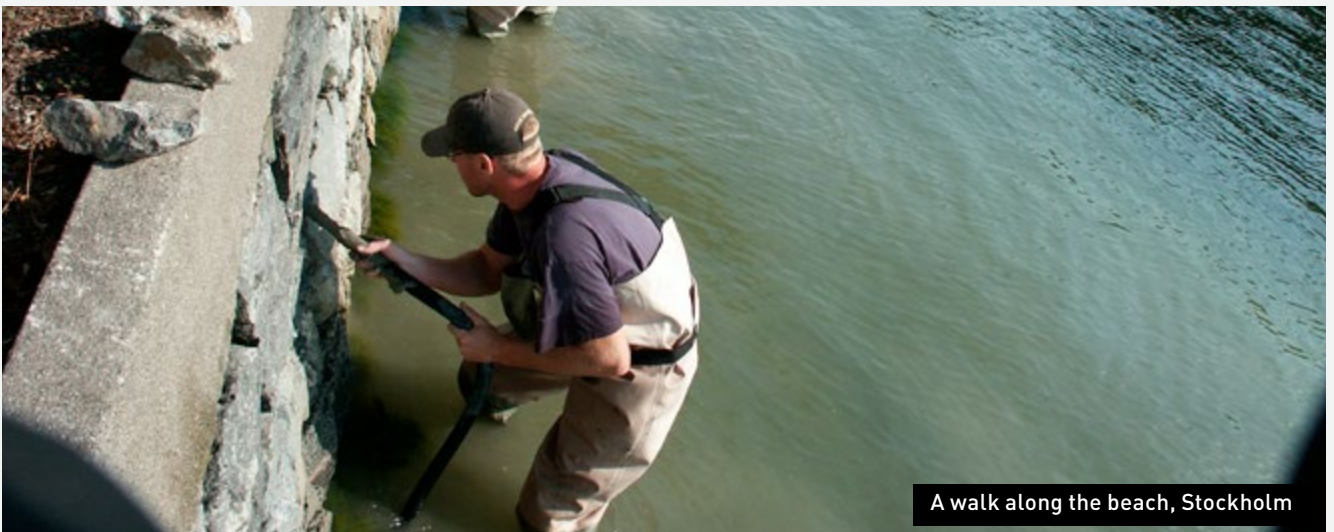
Special mortars for challenging situations

We are specialists when it comes to expanding mortars for applications such as advanced underpinning which requires easy-to-pump, strong, non-shrink materials. As the name implies these products expand before they cure. Unlike normal fine concrete that shrinks as the water evaporates, our expanding mortar is almost non-shrinking dry mortar that is mixed with water. Adhesion is excellent both to steel and concrete and, thanks to its high final compressive strength, castings also have an extremely long service life. Most expanding mortars are pumpable and fluid so as to effectively fill formwork and cavities.

Our range

Our wide range covers a number of areas of application, everything from the underpinning of machines, crane runways, columns and bridge bearings to screeding bathroom floors and anchoring bolts in rock. In the special mortar sector there are highly processed, bagged mortar products

and equipment for underpinning and grouting. We also have a complete range of mortars for jointing prefabricated concrete elements.



Underpinning and pointing mortar

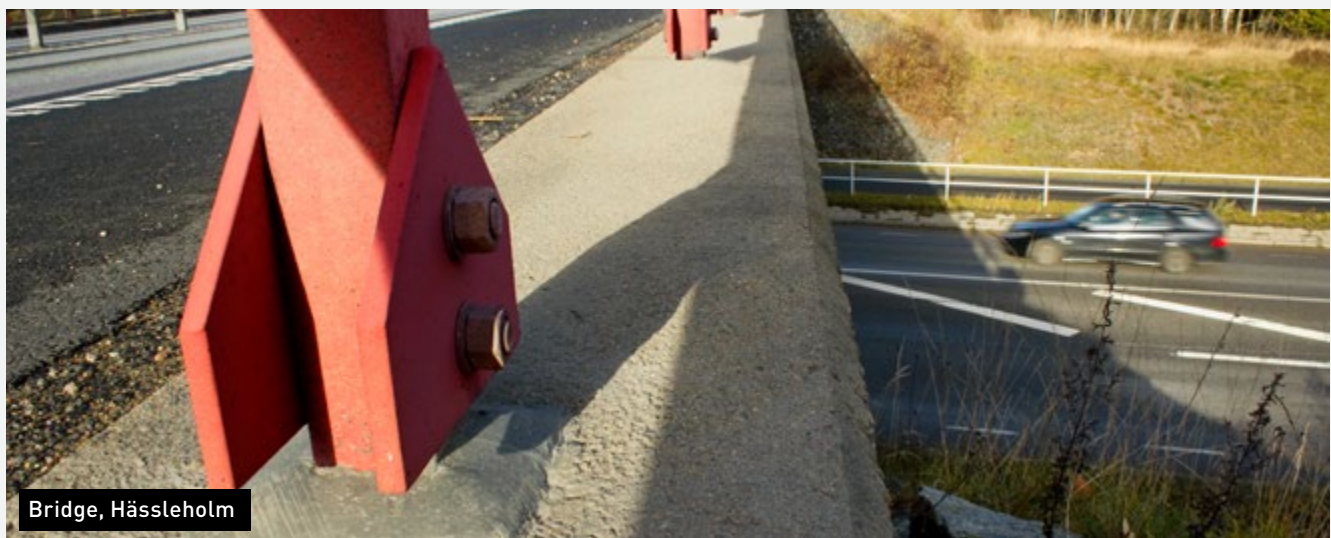
Underpinning machines, crane runways and overhead cranes

Bemix Standard is the product that should be used for underpinning and anchoring machines. This is because from an installation perspective it has the fastest strength increase (approximately 50 MPa after a 24 hour period at 20°C). It is also easy to pump and is fluid, which is vital for good underpinning.



Jointing when assembling prefabricated concrete

Bemix F4 is pumped in a thixotropic consistency into the joints between concrete elements without the need for formwork. This working method is significantly quicker than conventional methods using formwork or filling prior to pointing. When jointing in freezing temperatures add Bemix Köldbetsattillsats cold concrete admixture (Bemix F4 FF).



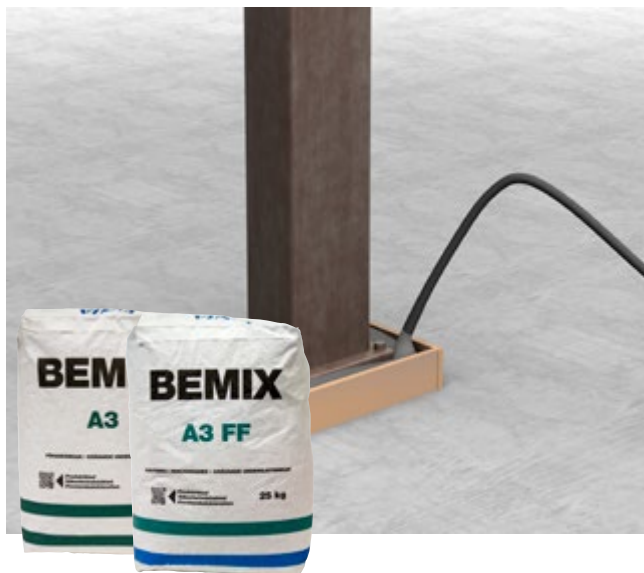
Underpinning columns

Bemix P3 and Bemix S3 are underpinning mortars suitable for the underpinning of concrete and steel columns. In freezing temperatures use Bemix Köldbrik cold mortar or Bemix Köldbeton tillsats cold concrete admixture to Bemix P3 or Bemix S3. Bemix S3 contains plastic fibre to reduce cracks, suitable when casting large areas or for thicker castings.



Underpinning bridge bearings

Bemix A3 is based on Portland construction cement and is used for the underpinning of bridge bearings, often using a pump from Bemix. The product is approved according to the AMA Anläggning general material and workmanship specifications for the underpinning of bridge bearings and embedding guardrail posts. In freezing temperatures use Bemix A3 FF, which is also approved according to AMA Anläggning. Used for casting down to -10°C .



Expanding mortar



Bemix Standard is a pumpable expanding mortar used for underpinning and filling where there is a demand for rapid, high strength. Used when there are stringent requirements related to underpinning, such as for machine underpinning, bolt anchorage and bridge bearings. Compressive strength at 20°C after 28 days: >80 MPa.

Art.nr	Product	Weight
1100000	Bemix Standard	25 kg



Bemix Grov is a coarse expanding mortar used for the heavy duty underpinning of machinery and columns and for as well as filling penetrations in floor structures. Compressive strength at 20°C after 28 days: >75 MPa.

Art.nr	Product	Weight
1100010	Bemix Grov 25 kg	25 kg



Bemix Fin is a fine expanding underpinning mortar, for use where the requirement is for finer aggregate. Its consistency is fluid and the product has good pumpability. Used for machine underpinning and anchorages. Compressive strength at 20°C after 28 days: >70 MPa.

Art.nr	Product	Weight
1100030	Bemix Fin	25 kg



Bemix P3 is a mortar for underpinning and for screeding bathroom floors (quick drying). Compressive strength at 20°C after 28 days: >60 MPa.

Art.nr	Product	Weight
1100150	Bemix P3	25 kg



Bemix S3 is an expanding mortar for underpinning. It is particularly suitable for casting large areas such as in-situ casting and foundations. The fibres keep the fresh mix together, which, using special equipment facilitates underwater casting. Very good pumpability and frost resistance. Compressive strength at 20°C after 28 days: >60 MPa.

Art.nr	Product	Weight
1100310	Bemix S3	25 kg



Bemix F4 is a pumpable thixotropic expanding jointing mortar. Used in the jointing of concrete elements and blocks of granite. Compressive strength at 20°C after 28 days: >40 MPa.

Art.nr	Product	Weight
1100200	Bemix F4	25 kg
1100340	Bemix F4	1000 kg



Bemix F4 FF is a thixotropic expanding pumpable jointing mortar that cures in freezing temperatures. Used in the jointing of concrete elements and blocks of granite. Compressive strength at 20°C after 28 days: >40 MPa.



Bemix High Tech 310 is a thixotropic mortar, suitable for jointing and the repair of structures with Portland construction cement. Compressive strength at 20°C after 28 days: >70 MPa.



Bemix High Tech 310 FF is an expanding pumpable thixotropic mortar and admixture that can be used down to -10°C. Mainly used for jointing where a sealed high strength joint is required. Also suitable for smaller castings with exacting requirements. Compressive strength at 20°C after 28 days: >60 MPa.

Art.nr	Product	Weight
1100300	Bemix F4 FF	25 kg
1101640	Bemix F4 FF	1000 kg

Art.nr	Product	Weight
1100420	Bemix High Tech 310	25 kg

Art.nr	Product	Weight
1100520	Bemix High Tech 310 FF	25 kg



Grout injectors

Grout injector for jointing concrete elements, filling formwork in confined spaces, filling drill holes – in all directions as well as underpinning. Holds approximately one litre of mortar.

Picture	Art.nr	Product
1	2810005	Bemix Bruksspruta rak
2	2810015	Bemix Bruksspruta böjd rak
3	2810035	Bemix Bruksspruta rund
4	2810025	Bemix Bruksspruta rund böjd

Expanding mortar



Bemix Köldbuk cold mortar is a ready-mixed expanding product intended for casting in freezing temperatures. Used for underpinning columns and prefabricated concrete elements and where there is a requirement for taking down formwork quickly. NOTE! Cures in freezing temperatures. Compressive strength at 20°C after 28 days: >40 MPa.

Art.nr	Product	Weight
1100040	Bemix Köldbuk	25 kg



Bemix Elementfogbruk dry expanding element jointing mortar is used for jointing and underpinning. It is pumpable and can be used for filling voids, underpinning columns and machines and filling the hollow core joints of elements etc. It is also suitable for other types of casting such as steps, foundations and retaining walls. Compressive strength at 20°C after 28 days: >50 MPa.

Art.nr	Product	Weight
1100650	Bemix Elementfogbruk	25 kg
1100190	Bemix Elementfogbruk	1000 kg



Bemix Elementfogbruk FF dry expanding element jointing mortar is used for straight-forward casting, jointing and underpinning in freezing temperatures. It is pumpable and can be used for filling voids, underpinning columns and machines etc. It is also suitable for casting steps, foundations and retaining walls for example. Compressive strength at 20°C after 28 days: >45 MPa.

Art.nr	Product	Weight
1100660	Bemix Elementfogbruk FF	25 kg
1100250	Bemix Elementfogbruk FF	1000 kg





Bemix A3 is used for exacting anchoring and underpinning of machines and bridge bearings for example. Compressive strength at 20°C. After 28 days: >80 MPa.



Bemix A3 FF can be used down to -10°C. Used for exacting anchoring and underpinning of machines and bridge bearings for example. NOTE! Cures in freezing temperatures without being heated. Compressive strength at 20°C after 28 days: >60 MPa.



Bemix KÖLDBETONGTILLSATS cold concrete admixture is a chloride-free, antifreeze admixture for mortar and concrete that helps strength increase in freezing temperatures, and reduces the risk of frost damage.

Art.nr	Product	Weight
1100110	Bemix A3	25 kg

Art.nr	Product	Weight
1100090	Bemix A3 FF	25 kg

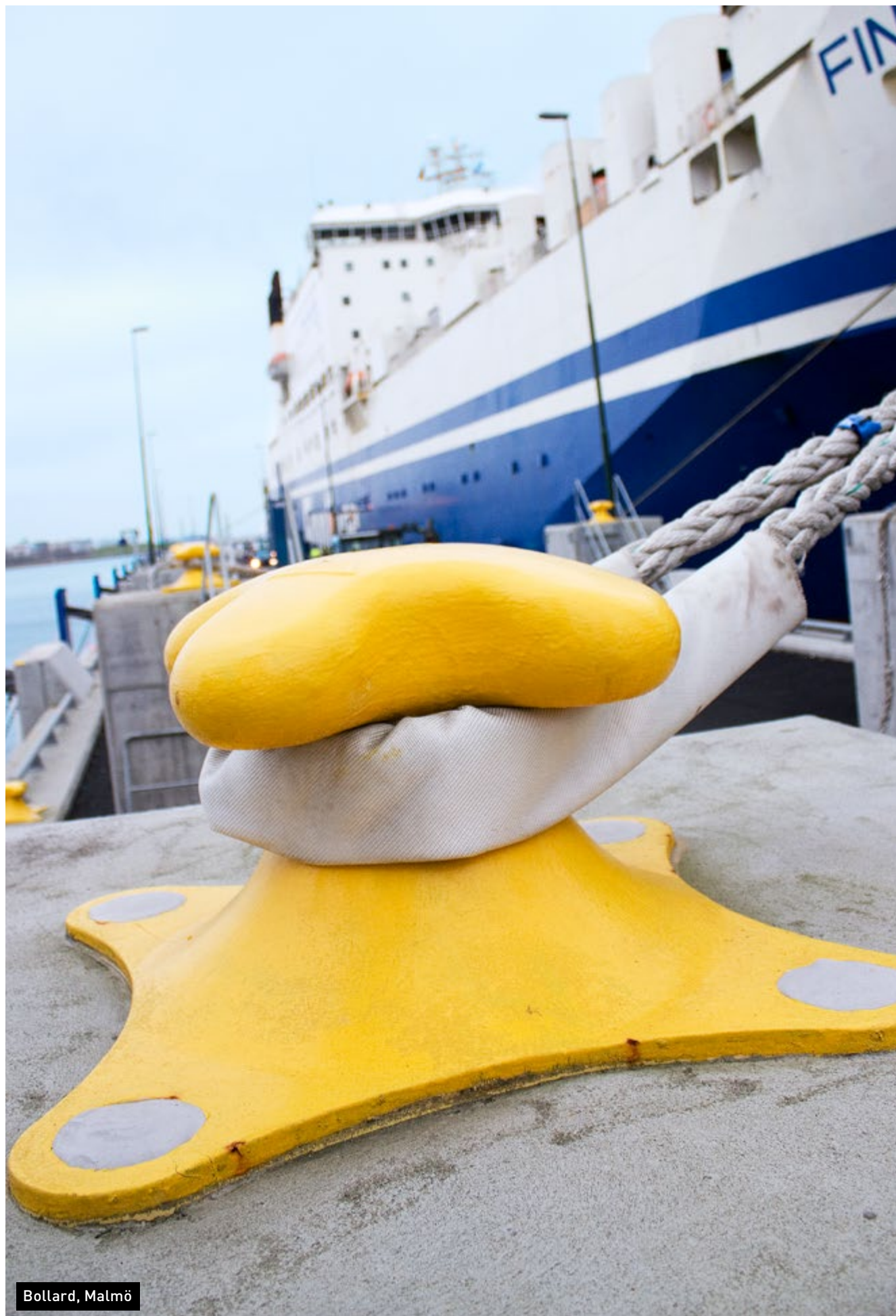
Art.nr	Product	Weight
1080005	Bemix KÖLDBETONGTILLSATS	20 kg



Accessories

We can supply the most essential accessories for prefabricated concrete installation. Ergonomics and quality characterise our products, which not only make the work easier but make it comfortable.

Picture	Art.nr	Product	
1	1150535	Bemix Ergospackel	200 mm
2	1150545	Bemix Ergospackel	350 mm
3	1150565	Bemix Iläggarslev	140 mm
4	1150505	Bemix Blandarhink	20 l
5	1150575	Bemix Fogkanna	14 l
6	1150555	Bemix Betongskrapa	300x200x1mm



Bollard, Malmö

REPAIR MORTAR

Complete range of repair products

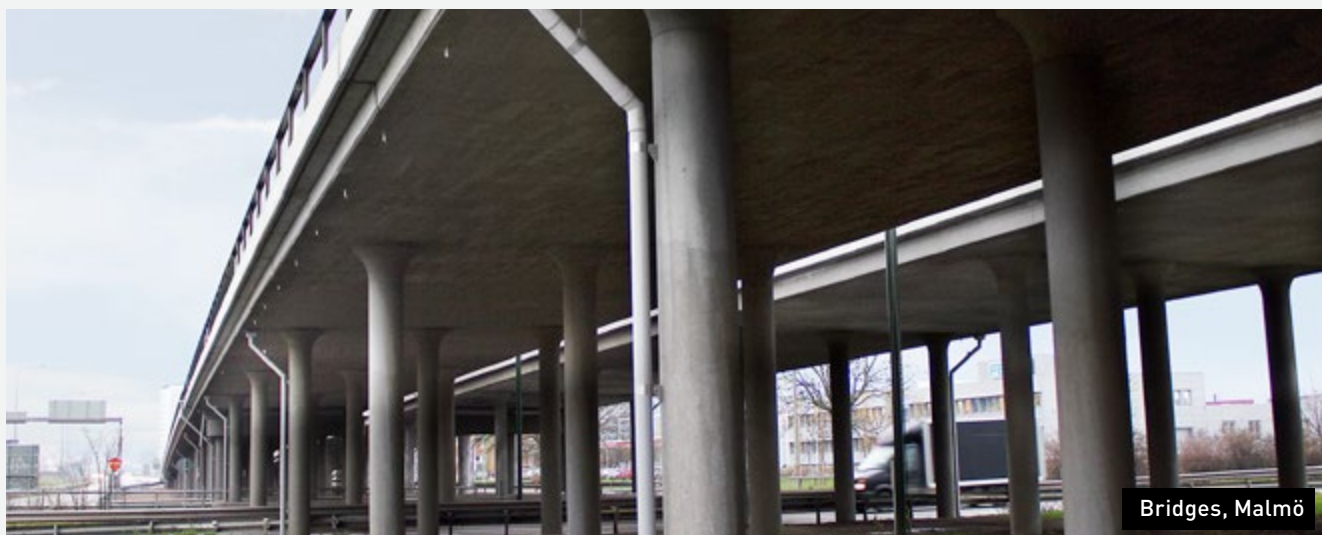
There are many external factors that affect the degradation of concrete, both chemical and mechanical. While faulty design and incorrect execution are common reasons for concrete damage, it is often due to a combination of factors.

The damage should be inspected before repairs are started. This is to find out what has caused the damage in order to undertake the correct repair procedure. Factors investigated in an inspection include the strength of the concrete, the condition of the reinforcement, carbonation depth and concrete cover to reinforcement. Straightforward types of damage can be inspected visually with the help of a chisel, whereas more complicated types of damage should be inspected by an expert.

Our range

We have extensive expertise in the repair and reinforcement of concrete and therefore have a range of products

aimed at just that. The range includes several different products, from corrosion inhibiting primer to high-performance repair mortar.



Concrete repair and methods

Preparation

The prerequisite for a successful concrete repair is correct preparation. The area for repair must first be cleaned carefully. All damaged concrete and reinforcement corrosion must also be removed. This can be carried out by hand or using mechanical aids such as hydrodemolition or abrasive blasting. Select the cleaning method taking into consideration the extent of the damage. Supplement or replace damaged reinforcement.

The concrete cover to reinforcement should never be less than 20 mm. Depending on the type of structure the cover may need to be a lot greater than that. The shape of the repair site should be suitable so as to avoid cavities.

Without formwork

Water the site of the repair until it is moist, in other words absorbent but not saturated. Then cover the cleaned concrete and reinforcement with Bemix Korrohäft anti-corrosion bonding slurry. Apply the next layer before the Bemix Korrohäft anti-corrosion bonding slurry has dried. Build up the damage using Bemix R15 or Bemix R50 which are easy to work and mould repair mortars.

Use Bemix Betongspackel concrete filler on more demanding repairs; this has a long working time, a smooth consistency and is ideal for many repair sites.



Korrohäft

Cement-based slurry for increased adhesion to concrete and steel. Bemix Korrohäft anti-corrosion bonding slurry is also used as a decorative outer layer on repairs and the surrounding concrete. As an outer layer the product is suitable on concrete and steel surfaces that are not subject to mechanical wear.

Art.nr	Product	Weight
1100370	Bemix Korrohäft	5 kg

With formwork

Water the site of the repair until it is moist, in other words absorbent but not saturated. For small repairs and a thin concrete cover prepare the concrete and reinforcement using Bemix Korrohäft anti-corrosion bonding slurry. Larger castings do not normally need to be treated with Bemix Korrohäft anti-corrosion bonding slurry if the water-red concrete has a rough, tooled surface.

Use Bemix P3 or A3 for casting depending on the thickness of the layer. These products are highly resistant to frost, chemicals and mechanical wear. In addition they provide good protection to reinforcement.

Shotcrete

Hydroblasted surfaces do not normally need further preliminary treatment. Surfaces cleaned dry are to be washed with water at high pressure. When applying shotcrete the surface should be somewhat absorbent. Any exposed reinforcement bar should be treated with Bemix Korrohäft anti-corrosion bonding slurry. Bemix SP40 is then applied using dry mix spray equipment. The mortar is based on Portland construction cement and is suitable for repairs that have a requirement for low shrinkage and cracking. Shotcrete is available in 0–6 millimetre.

Wrap-up

Following repair the mortar or concrete must be protected from drying out too quickly. This can be carried out through wetting, or, where possible, by covering it with plastic or wet fabric for about a week. This treatment should be adapted to the climate and product used.

If a more uniform surface structure is desired following a repair, Bemix Korrohäft anti-corrosion bonding slurry can be applied to the repair site and surrounding concrete, if surfaces are not subject to wear.



Repair mortar



Bemix R50 is a high performance, fibre-reinforced, shrinkage compensated, thixotropic repair mortar for the repair of concrete where there is a need for a high-grade, permanent repair. Can be used on vertical surfaces without the need for formwork. For the repair of balconies, bridges, jetties and other concrete structures exposed to chemical and mechanical load. Intended for layer thicknesses of 5-50 mm. Compressive strength at 20°C after 28 days: >45 MPa.

Art.nr	Product	Weight
1100270	Bemix R50	25 kg



Bemix Betongspackel concrete filler is a cement-based, flexible filler with a long working time for concrete surfaces indoors and outdoors. Used for filling casting pores and casting seams and also for the repair of steps, balconies, etc. The extended working time makes the product particularly suitable for time-consuming repairs. Intended for layer thicknesses up to 15 mm. Compressive strength at 20°C after 28 days: >10 MPa.

Art.nr	Product	Weight
1100750	Bemix Betongspackel	25 kg



Bemix SP40 is a dry mortar specially developed for dry-mix shotcreting. This mortar is based on Portland construction cement and well graded aggregate aerated for good frost resistance. For repairs with a requirement for minimal shrinkage and cracking. Used for lining tunnels, reinforcing columns, beams, jetties and other concrete structures. Compressive strength at 20°C after 28 days: >30 MPa.

Art.nr	Product	Weight
1100800	Bemix SP40	25 kg

The Byggpall pallet return system

The Byggpall pallet return system is nationwide and has been developed to streamline pallet management. The system means that pallet management is cheaper, easier and more environmentally sound at every level.

Byggpall makes pallet management simpler and reduces the number of pallets in the workplace. Returning pallets is straightforward and efficient because Byggpall is responsible for collection, repair and repurchase. All stages of the pallet's

journey are tracked and finally it is returned to Byggpall. Suppliers and intermediaries invoice their customers and the end user sells the pallet back at a fixed repurchase price. This makes it an economic option and reduces building waste.

For further information go to www.byggpall.se.



Finja Laga Vagg wall repair mortar acts as a filler for the adjustment of materials such as concrete, lightweight concrete, stone and ceramics, plaster of at least class CS II and plasterboard. For use on walls and ceilings. Provides a suitable substrate for clinker, wallpaper and painting. For indoor use. Compressive strength at 20°C after 28 days: 10.0 MPa.

Finja Primer is used in the pre-treatment of most types of substrate to which Finja's filler or tiling products are to be applied.

Art.nr	Product	Weight
1100285	Laga Vagg	25 kg

Art.nr	Product	Weight
1100385	Finja Primer	5 kg



Byggpall



Pump S44

MACHINES

Pumps, mixers and machine packages

Personal service is important to us so we like working near to our customers. We offer end-to-end solutions and complete packages consisting of materials, machines and accessories. As a customer our extensive range means that we can offer you the best conditions for a successful construction process.

We also offer personal advice and instructions. If you want we can come to your site to ensure that work gets going and runs as it should. Using our machines, accessories and expertise means that you can feel secure throughout the process.

Our range

We supply machines and accessories that are practical, reliable and easy to use. They have been developed to work optimally with our products and, in combination with our special mortars; these machines can make your construction process more effective. At the same time as you purchase material from us you have the opportunity to hire or buy machinery. Among other things we have the advantage of being the general agent for Rojo which manufactures some of the best and toughest mixers for professional use on the market.



Flat mixer Rojo 80

Pumps

Pumps

For the best results we offer end-to-end solutions. This is possible thanks to our comprehensive machine park including pumps, mixers and flat mixers. We have

everything from hand operated injectors to pumps for injection, jointing, rendering, underpinning etc. Our pumps are available for sale or hire.



Jointing concrete elements with Bemix F4.



Heavy duty and reliable pump that fits well under flat mixers such as the Rojo 80. Suitable for use with Bemix 310, Bemix F4 and Bemix Elementfogbruk.

Art.nr	Product
2820309	Brukspump S 30

Art.nr	Product
2820319	Brukspump S 30 HD 40

Which pump should I choose?

	S 30	S 30 HD 40	S 44	S 48
Part number	2820309	2820319	2820339	2820349
Capacity	10—30 l/min	10—50 l/min	20—40 l/min	20—50 l/min
Maximum stone size	4 mm	6 mm	4 mm	4 mm
Pump hose	1"—1 1/4"	1"—1 1/4"	1"—1 1/4"	1"—1 1/4"
Motor	3-phase power supply	3-phase power supply	3-phase power supply	3-phase power supply
Weight	120 kg	140 kg	130 kg	220 kg
Can be used with	Bemix F4, 310	Bemix F4, Elementfogbruk, 310	Bemix F4, 310	Bemix F4, 310



Mono screw pump. Suitable for pumping Bemix F4, Bemix F4 FF and Bemix 310 High Tech. The hose is not included but can be hired in lengths of 5 - 40 m.

Art.nr	Product
2820349	Brukspump S 48



Pumps thixotropic mortar such as Bemix 310 and Bemix F4. Excellent for jointing concrete elements or blocks of granite.

Art.nr	Product
2825625	Brukspump S 36

	S 36	MP 1	TS 750 V	TS 2 MN
Part number	2825625	2820209	2820219	2820229
Capacity	10—20 l/min	~1 m³/tim	0,7—1,5 m³/tim	~2 m³/tim
Maximum stone size	4 mm	4 mm	4 mm	4 mm
Pump hose	1" —1 1/4"	1 1/4"—2"	1 1/4"—2"	1 1/4"—2"
Motor	3-phase power supply	3-phase power supply	3-phase power supply	3-phase power supply
Weight	105 kg	80 kg	78 kg	140 kg
Can be used with	Bemix F4, 310	Bemix Standard, A3, Fin	Bemix Standard, A3, Fin	Bemix Standard, A3, Fin

Mixers

Rojo's mixers

Rojo mixers are reliable, heavy duty and robust and are excellent at mixing concrete, mortar and fireproof filler, but also rubber chips, ash, chemical fertiliser and soil. Unique to Rojo mixers is that all components can be replaced and that it is easy to obtain spare parts.

They are also CE marked in accordance with the European safety standard. Another important benefit is that because all components are easily accessible they are easy to empty and clean. The mixers are available for sale or hire.



The **Rojo Minimax** has a drum with a bottom of 5 mm steel giving it durability and stability.

Art.nr	Product
2830129	Rojo Minimax



The **Rojo 80** is a new compact model which can mix the toughest materials such as earth-moist concrete. The drum is made of Hardox 400 which is a very durable steel.

Art.nr	Product
2830089	Planblandare Rojo 80

Which mixer should I choose?

	Rojo Minimax	Rojo 50	Rojo 80
Part number	2830129	2830119	2830089
Capacity	25–75 kg mortar or concrete	50 kg mortar or concrete	150 kg mortar or concrete
Total height	115 cm + 250 mm wheel	164 cm + 250 mm wheel	116 cm + 250 mm wheel
Weight	84 kg	90 kg	155 kg
Motor	1,5 kW 230 V/50 Hz 35 rpm	1,5 kW 400 V/50 Hz 250 rpm	3,0 kW 400 V/50 Hz 44 rpm
Materials	Galvanized or painted steel	Galvanized or painted steel	Hardox 400, painted steel
Draw off height	75 cm	76 cm	65 cm
Max. width	62 cm	110 cm	76 cm
Cover	Grid cover with sack cutter	-	Grid cover with sack cutter



The **Rojo 230** is a batch mixer for plaster, mortar and concrete. The open structure under the mixer makes it easy to empty into a wheelbarrow or screw pump.

Art.nr	Product
8001035	Rojo 230



Bulk bag holder/bag emptier

Using our practical bulk bag holder means that there is less lifting to be done which makes work easier and saves your back. Holds between one and ten tonnes.

	Rojo 130/230	Rojo 300
Part number	8001035	8001045
Capacity	125 l/225 l	300 kg
Total height	140 cm	142 cm
Weight	400 kg/500 kg	280 kg
Motor	4 kW (5,5 hk) 400 V/50 Hz 3 rpm, 3-phase	4,0 kW 400 V/50 Hz 35 rpm
Materials	Engineering steel	Engineering steel
Draw off height	63 cm	73 cm
Max. width	148 cm	127 cm
Cover	Fibreglass	Grid cover with sack cutter

Machine packages

Our package solutions

We offer complete package solutions, making it easy to select the right equipment for the job. Get in contact and we will help you find a package solution for your specific needs.



Rapid mixer equipment

Rojo 50 rapid mixer, drum, hose and hose pump TS 750 V. Suitable for small underpinning jobs from approximately 100 kg up to a couple of tonnes.



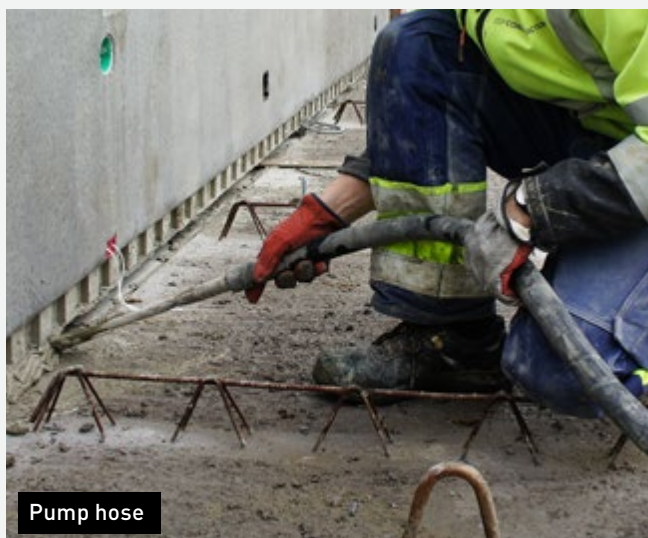
Automatic mixer equipment

Automatic mixer 404, drum, hose and hose pump TS 750 V. Suitable for slightly larger underpinning jobs from a couple of tonnes and upwards.



Jointing and bulk bag equipment

Pump S 30 HD 40, Rojo 80 mixer and ST 1 bulk bag holder. For prefabricated concrete installation with a lot of jointing.



Pump hose

Accessories

To give you the best conditions for your construction process we also supply accessories for machines, such as Wireless remote control and pump hoses.

Art.nr	Product
2920045	Pumpslang
1610235	Trådlös fjärrstyrning
2850039	Tryckstegringspump
2850029	Vattentunna med doppvärmare



FINJA SNIGELDYNAMIT®

High-expansion cement for quiet and effective fracturing

Sometimes conventional blasting techniques cannot be used to remove boulders, rock outcrops or concrete foundations, because of their location. Use Finja Snigeldynamit (snail dynamite) to fracture stone, rock and concrete – silently, simply and carefully without impacting the surrounding area. The product can be used both outdoors and indoors, above ground and under water, as long as the temperature is above freezing.

Fracturing stone, rock and concrete using Snigeldynamit is simple. It is vibration-free and does not cause fragmentation or gassing. No licence is needed to buy or use the product, and nor is expensive pre-inspection or re-inspection of neighbouring buildings. Fracturing is carried out when and where you want. All in all this gives a safe and satisfactory result and is economically sound.

How does Finja Snigeldynamit® work?

Snigeldynamit is a lime-based product that is mixed with water and which expands slowly as the mixture hardens. As it expands the pressure builds to over 80 MPa (8000 tonnes/m²). This means that granite, with a splitting tensile strength of 6–16 MPa, can be fractured easily. The same applies to plain concrete (3–5 MPa).

The expansion continues even after cracks have formed in the object. This expands the cracks even further, which makes transporting the fractured material away easy.



Finja Snigeldynamit®

Use for the silent, dust-free and vibration-free fracturing stone, rock and concrete. Damage to adjacent objects, which can easily occur during conventional blasting, is avoided.

Art.nr	Product	Weight
1132025	Finja Snigeldynamit®	2 kg
1132055	Finja Snigeldynamit®	4 kg
1132105	Finja Snigeldynamit®	10 kg

Instructions for use

Drilling holes

Because snigeldynamit expands at right angles to the hole, drill as parallel to the open face as possible. This provides the best possible fracturing.

Mixing

If the temperature of the object is above 10°C mix the snigeldynamit to a runny, gruel like consistency using the coldest water possible. If it is less than 10°C, use water at 20°C. Too much water reduces the force of expansion, so it is important to take care regarding the amount of water used.

Filling the holes

Handing times are short so the hole should be filled as soon as the mixture is ready.

Correct temperature

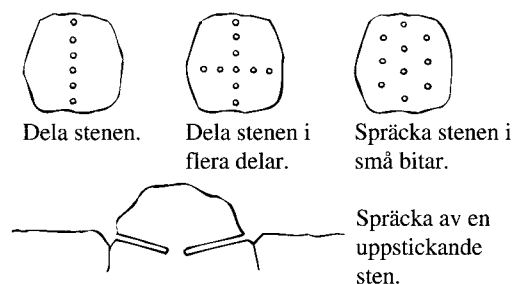
To avoid blowout the temperature is important. Blowout means that the mixture spurts out of the hole. This can occur if the rock or stone is too hot when it is filled, or if the temperature of the mixture is too high. The risk of blowout also increases when the diameter of a drill hole exceeds 40 mm, or in the case of holes drilled in concrete using a diamond drill bit. To minimise the risk of blowout cover the holes with wet sacking or the like and keep this wet for 24 hours.

Expansion and fracturing

Fracturing is usually complete after about a day. The structure and temperature of the object determines how long this takes. For example in rock it may take several days before fracturing is fully complete.

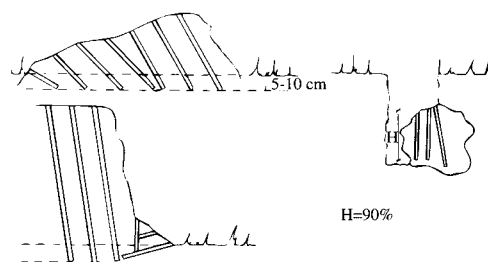


Drilling instructions



Stone

When drilling in stone make 30–40 mm diameter holes. The distance between the holes should be ten times the hole diameter, in other words 300–400 mm. The holes should be at least 300 mm deep and 80 per cent of the objects thickness. Larger holes provide a higher fracturing force.



Rock

When drilling in rock make 30–40 mm diameter holes. The distance between the holes should be five times the hole diameter, in other words 150–200 mm. The drilled depth should be 50 mm deeper than the intended crack-line. The holes must also be positioned so that fractured rock can fall away freely.

Remember...

Always use gloves and protective goggles as the mixture is alkaline and corrosive.

It is important that the hole diameter, depth and spacing is exactly right. The same applies to the water mixture and water temperature.

Never stand above filled holes. Blowout can take place if the temperature in the stone is too high when it is filled for example.

Read the detailed instructions in the packaging.

Usage table

Hole diameter	Finja Snigeldynamit® kg/metre	This is how far the different packages last		
		2 kg	4 kg	10 kg
35 mm	1,8 kg	1,1 m	2,2 m	5,6 m
38 mm	2,1 kg	0,95 m	1,9 m	4,8 m
44 mm	2,7 kg	0,75 m	1,5 m	3,6 m



See our films at



On our way to greener concrete

We have a natural commitment to sustainability issues; investing in the environment and the future comes instinctively. Since 2015 we have been self-sufficient in green electricity. Together our two wind power generators, up on Rödshöjden outside Sollefteå, produce almost 20 GWh of renewable energy. This is twice as much as the company consumes today; giving us the opportunity to grow while at the same time contributing to a sustainable society.

Please get in contact with us

Order +46 (0)10 455 95 00 • info@bemix.se

Address and warehouse: Finvids väg 6, 194 47 Upplands Väsby
Post box: Box 421, 194 04 Upplands Väsby

This brochure is intended to inspire and show examples of how different jobs can be carried out. Bemix is not responsible of structural solutions as the surrounding environment and the quality and condition of the substrate play an important role. For up-to-date information always refer to www.bemix.se.

BEMIX
— en del av Finja